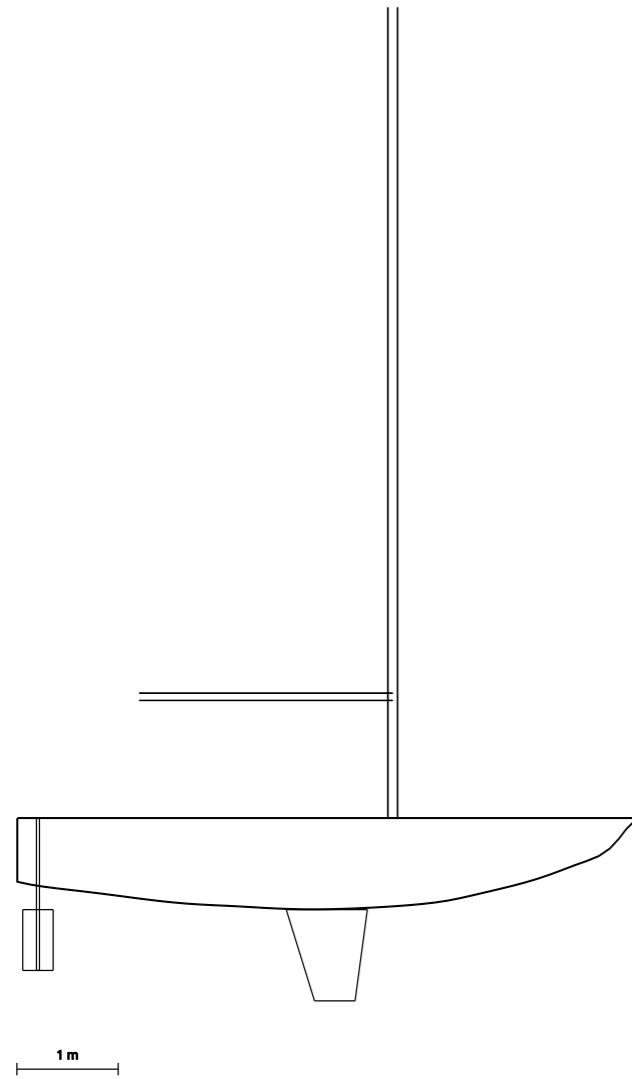
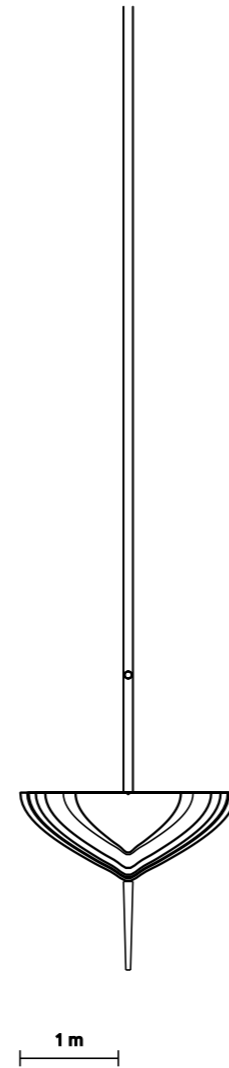


Lines Plan of KB1

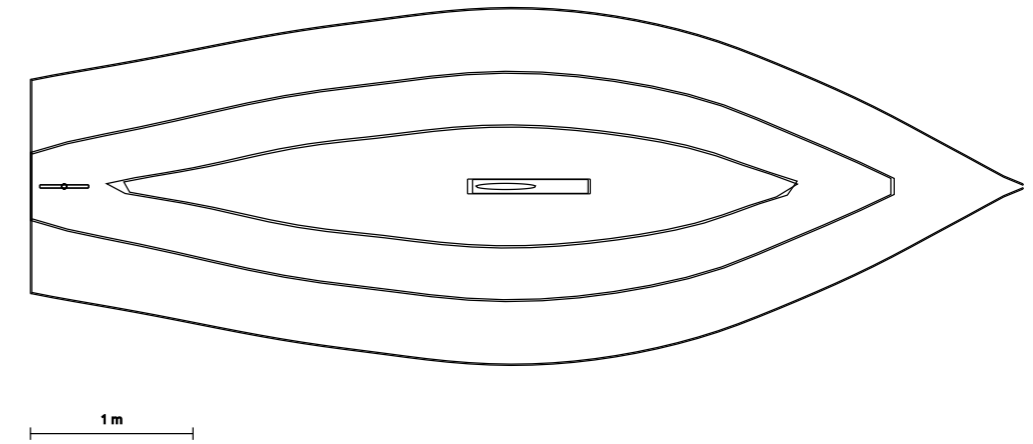
Profile



Body Plan



Full-Breadth Plan



Section Stations

| Station | Y (mm) |
|----------|--------|
| stn.0 | -3050 |
| stn.1 | -2033 |
| stn.2 | -1017 |
| stn.3 | 1 |
| stn.mast | 650 |
| stn.4 | 1017 |
| stn.5 | 2033 |
| stn.6 | 3050 |

Waterline Heights

| Waterline | Z (mm) |
|------------|--------|
| wl_below.2 | -200 |
| wl_below.1 | -100 |
| waterline | 1 |
| wl_above.1 | 200 |
| wl_above.2 | 400 |
| deck | 898 |

Principal Dimensions

| Parameter | Value |
|---------------|--------|
| LOA | 6.10 m |
| LWL | 5.60 m |
| Beam | 2.20 m |
| Draft (total) | 1.20 m |
| Hull Draft | 0.30 m |
| Freeboard | 0.60 m |
| Deck Level | 0.90 m |

Performance

| Parameter | Value |
|---------------|---------------------|
| Displacement | 1771 kg |
| Sail Area | 10.0 m ² |
| Mast Height | 8.00 m |
| Ballast Ratio | 23.2% |

Profile (Sheer Plan)

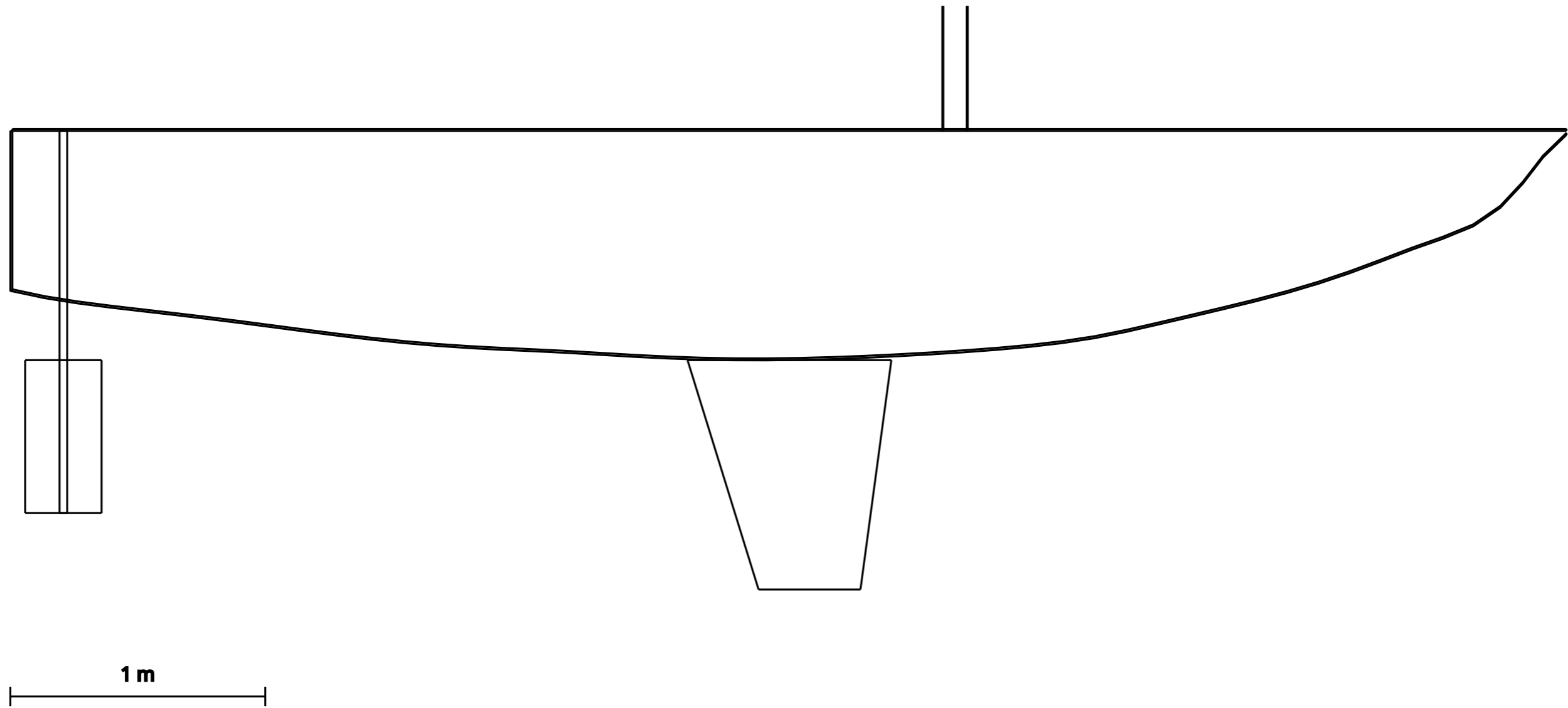


Figure 1: Profile—Centerline section (X=0)

Body Plan

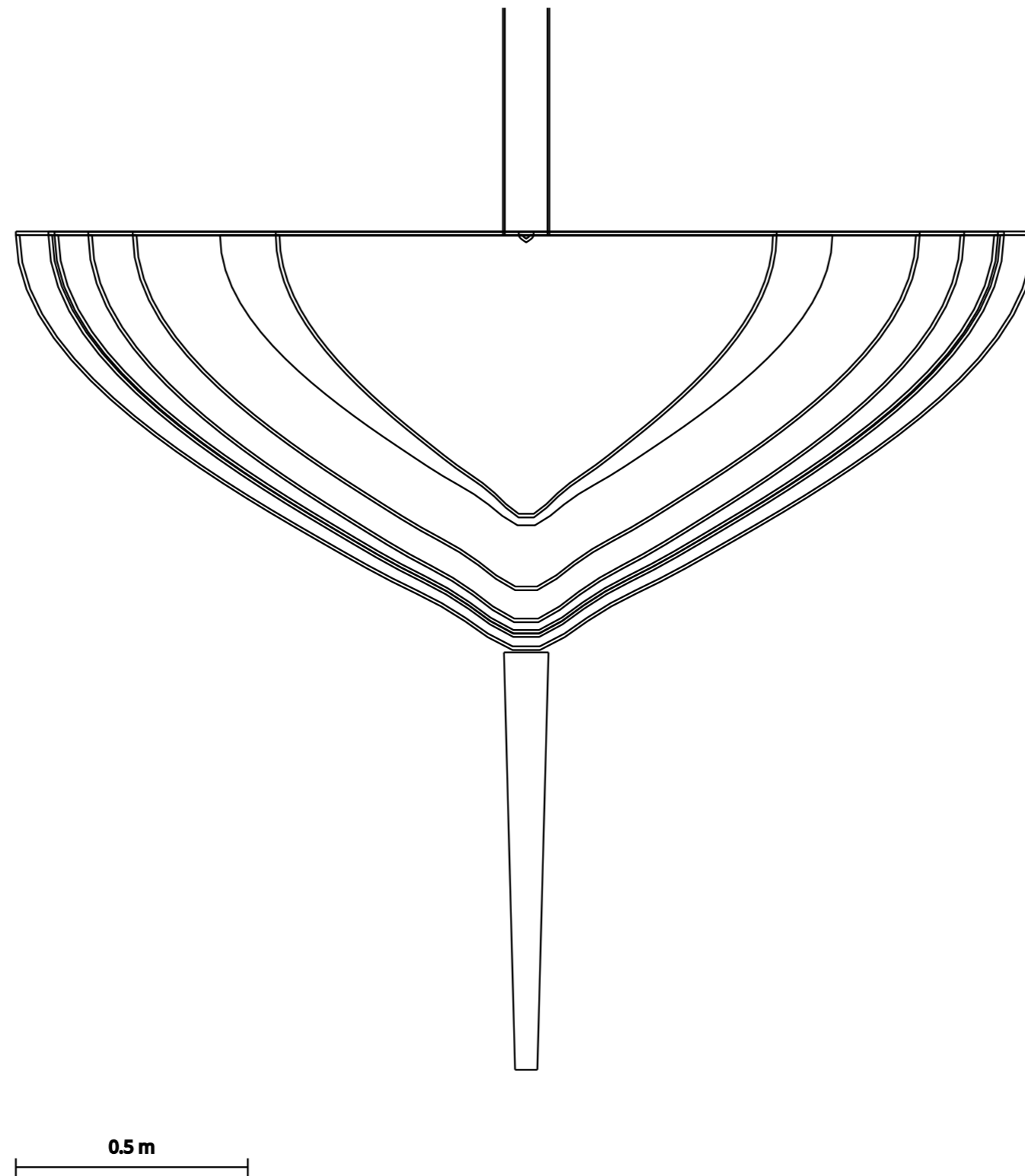
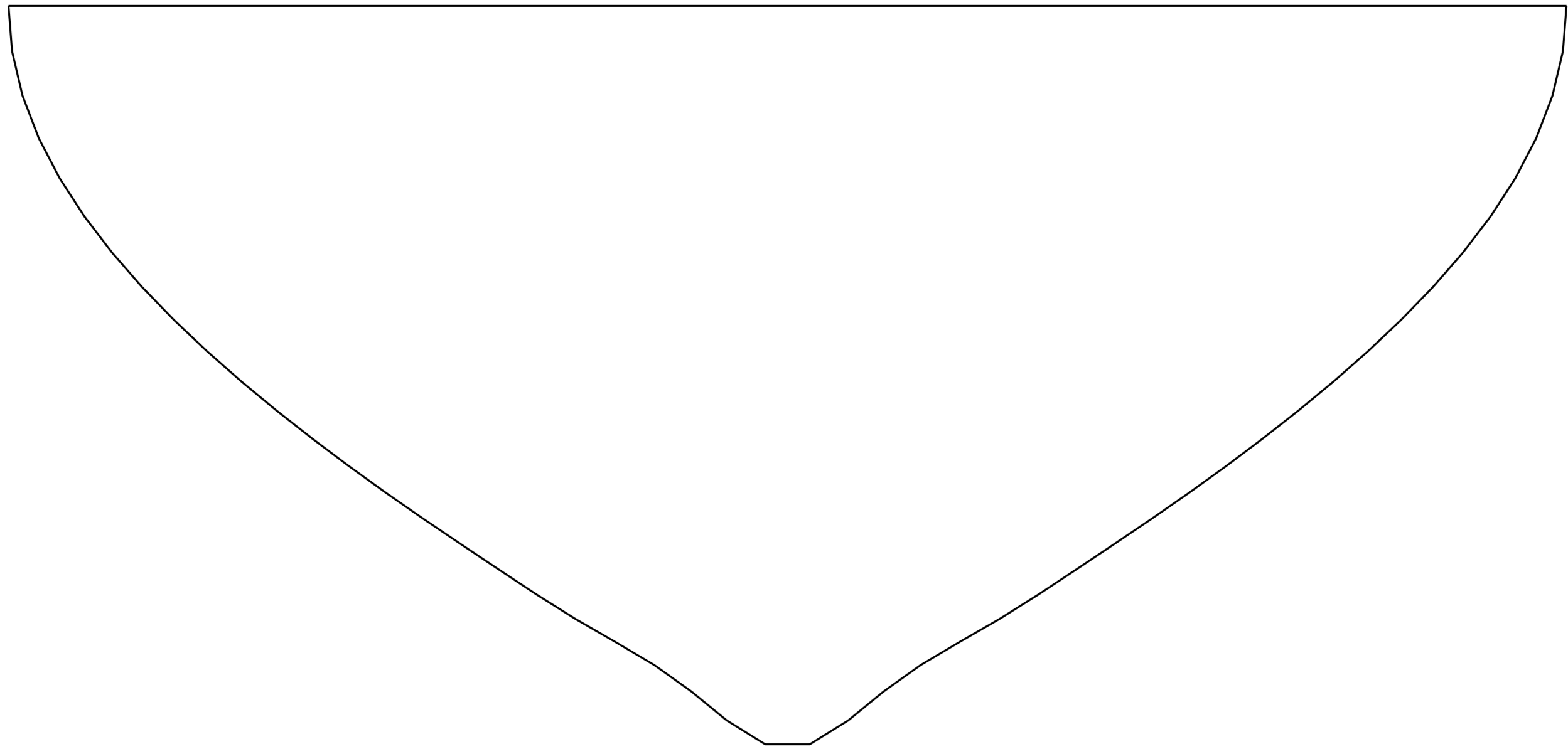
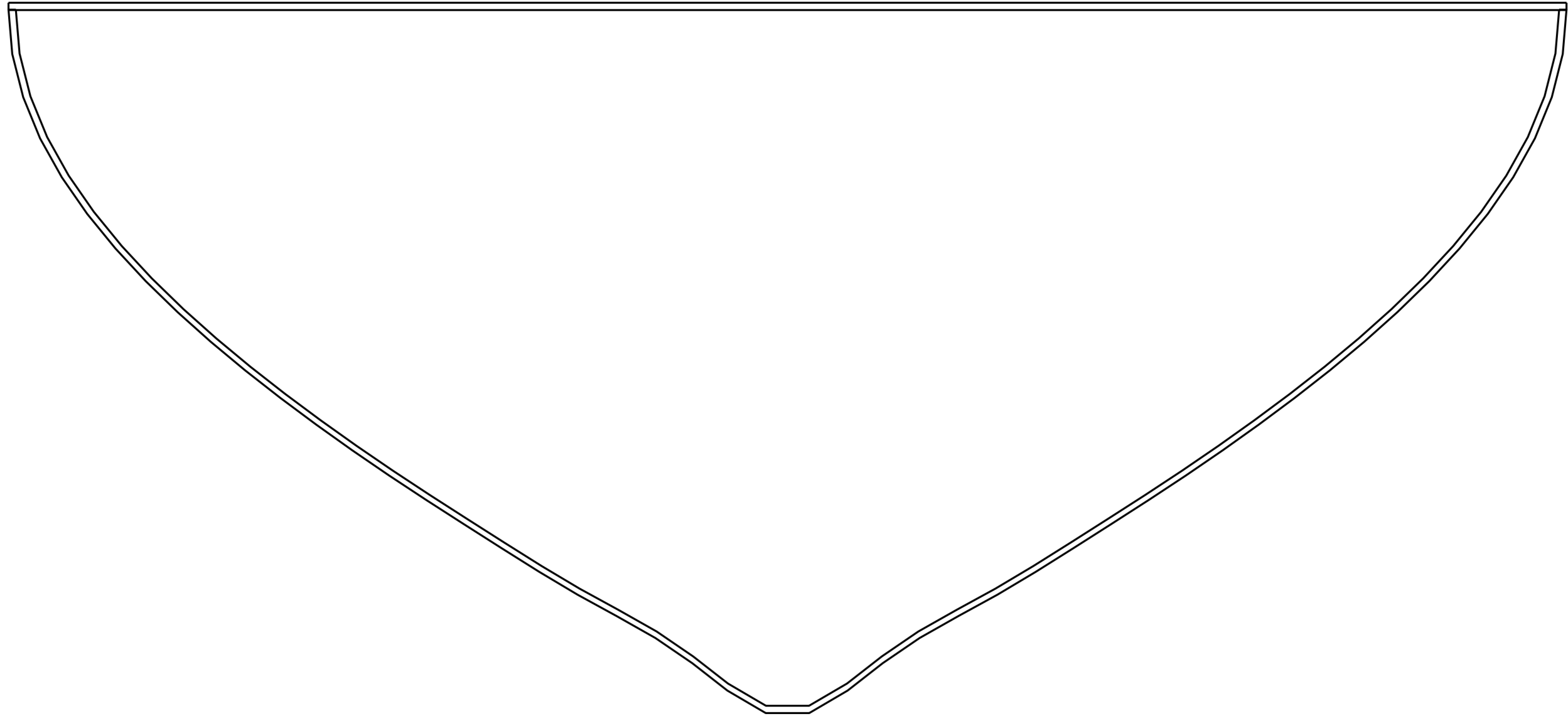


Figure 2: Combined body plan—All sections overlaid



200 mm

Figure 3: Body Plan—Section at stn.0 (Y=-3050mm)



200 mm

Figure 4: Body Plan—Section at stn.1 (Y=-2033mm)

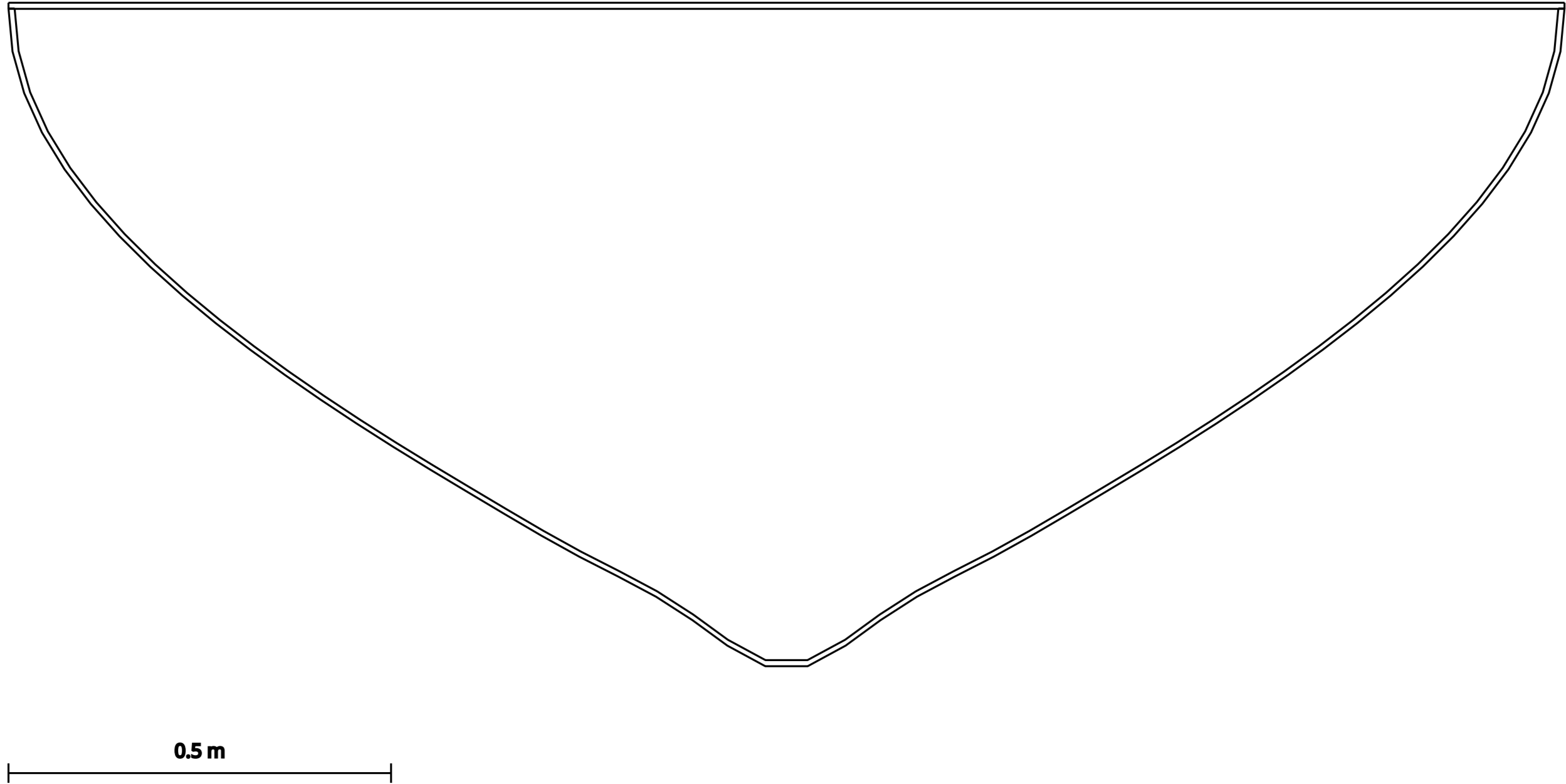
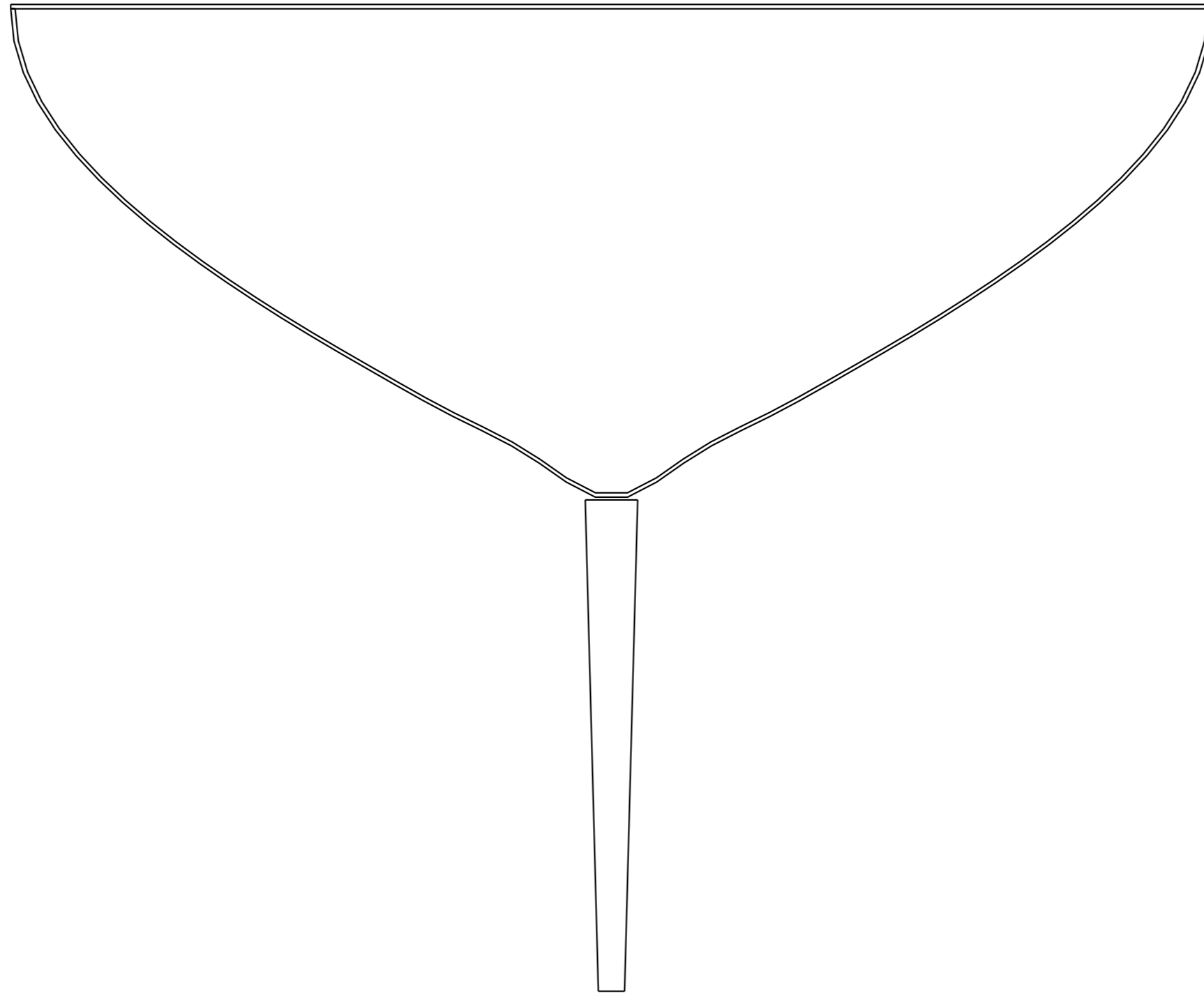


Figure 5: Body Plan—Section at stn.2 (Y=-1017mm)



0.5 m

Figure 6: Body Plan—Section at stn.3 (Y=1mm)

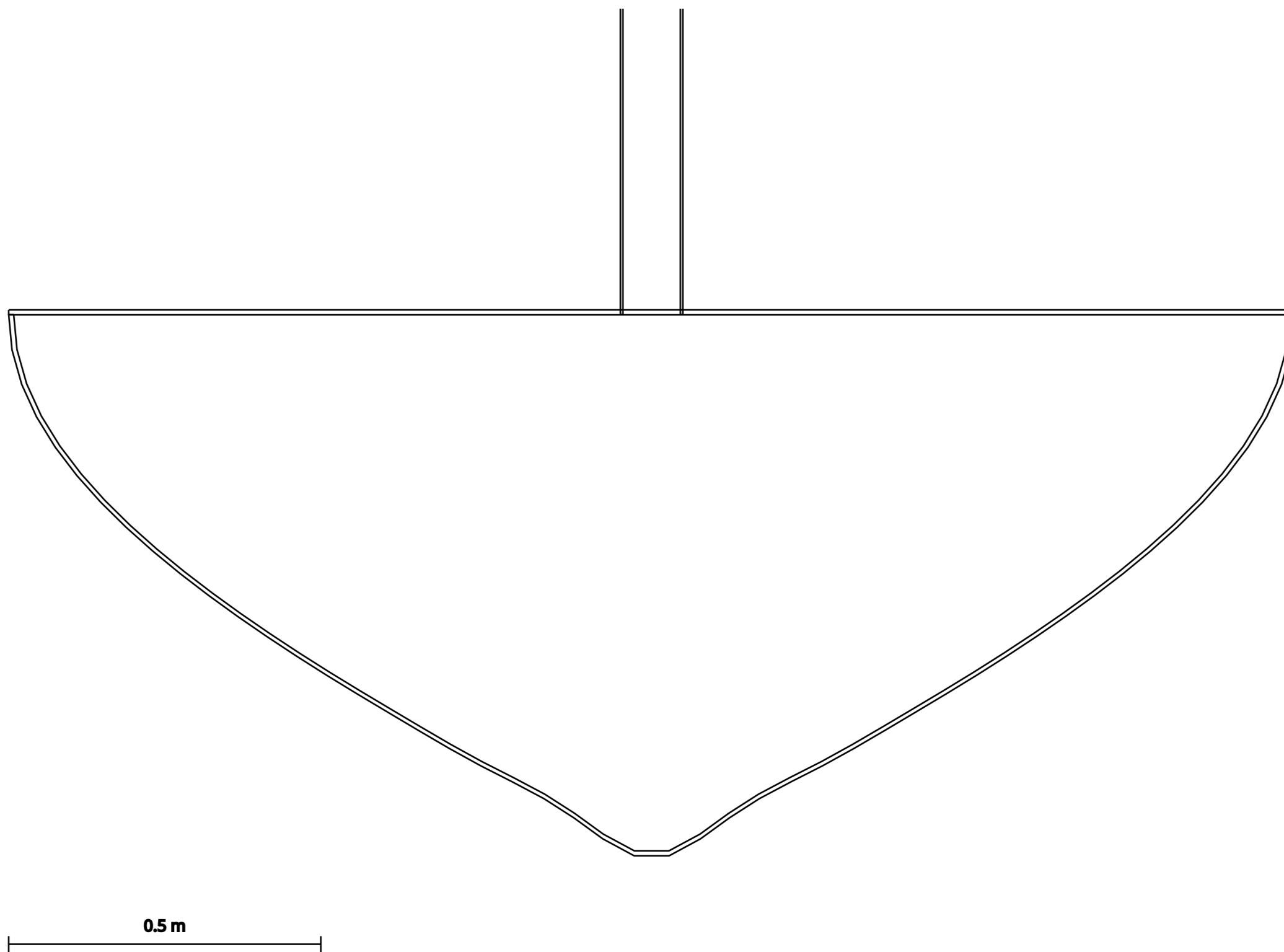
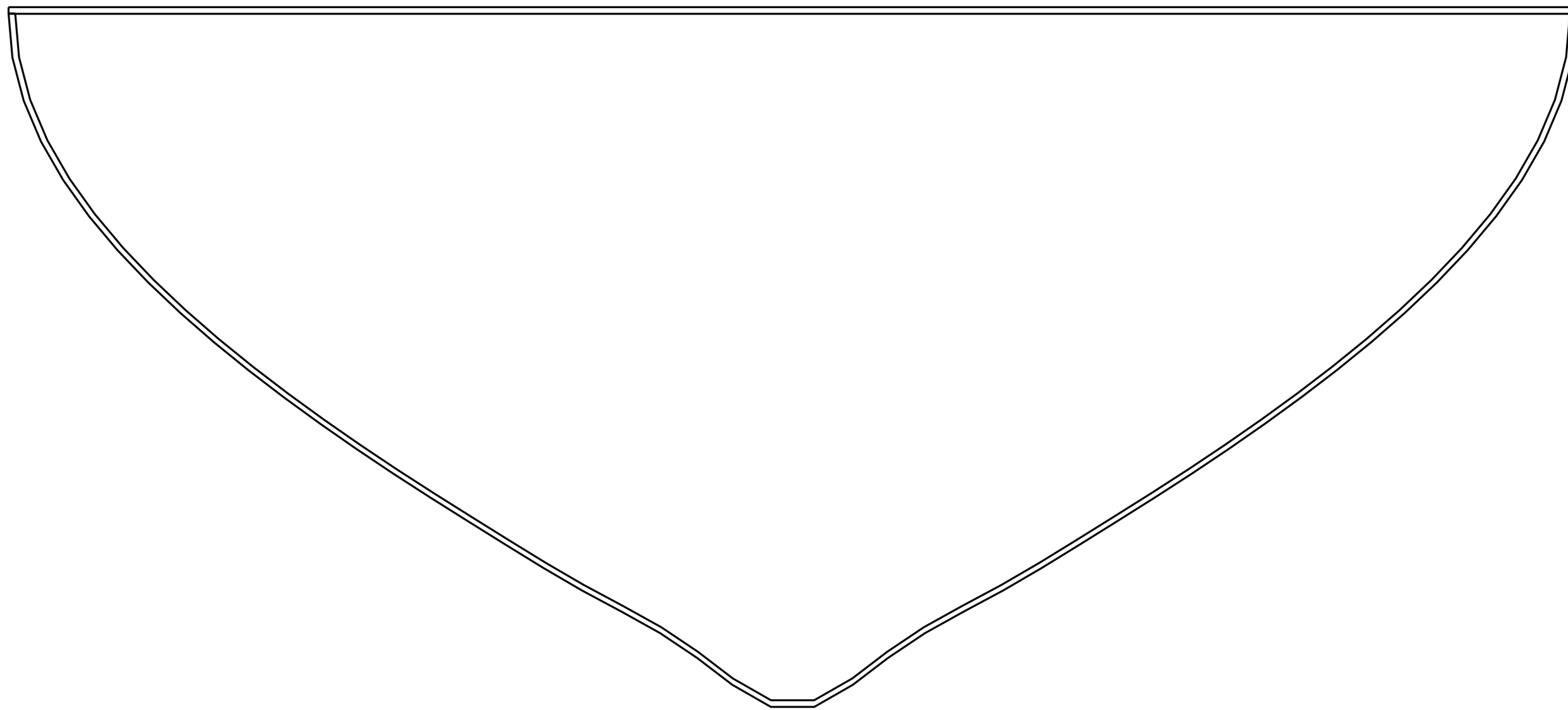
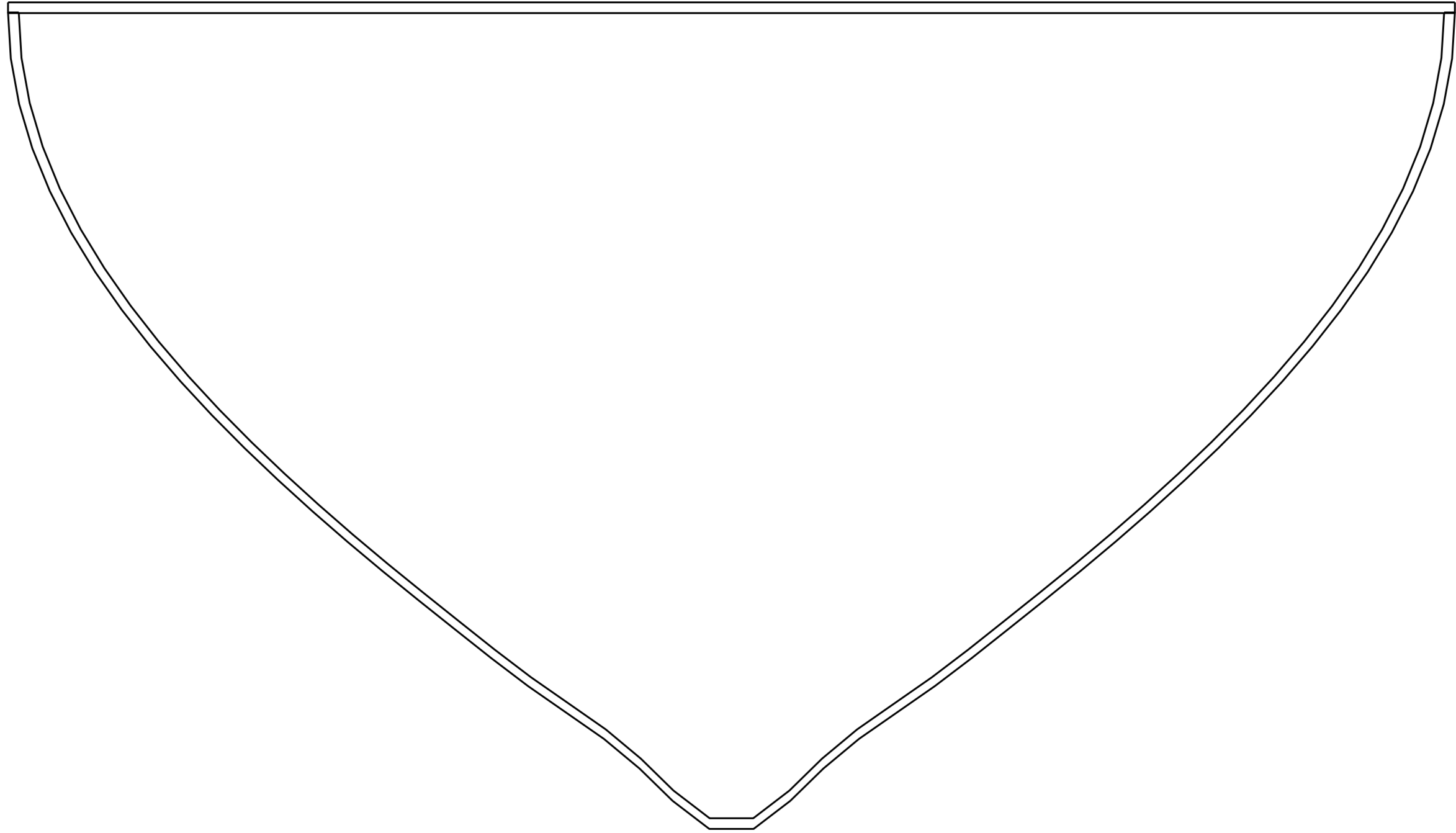


Figure 7: Body Plan—Section at stn_mast (Y=650mm)



200 mm

Figure 8: Body Plan—Section at stn.4 (Y=1017mm)



200 mm

Figure 9: Body Plan—Section at stn.5 (Y=2033mm)

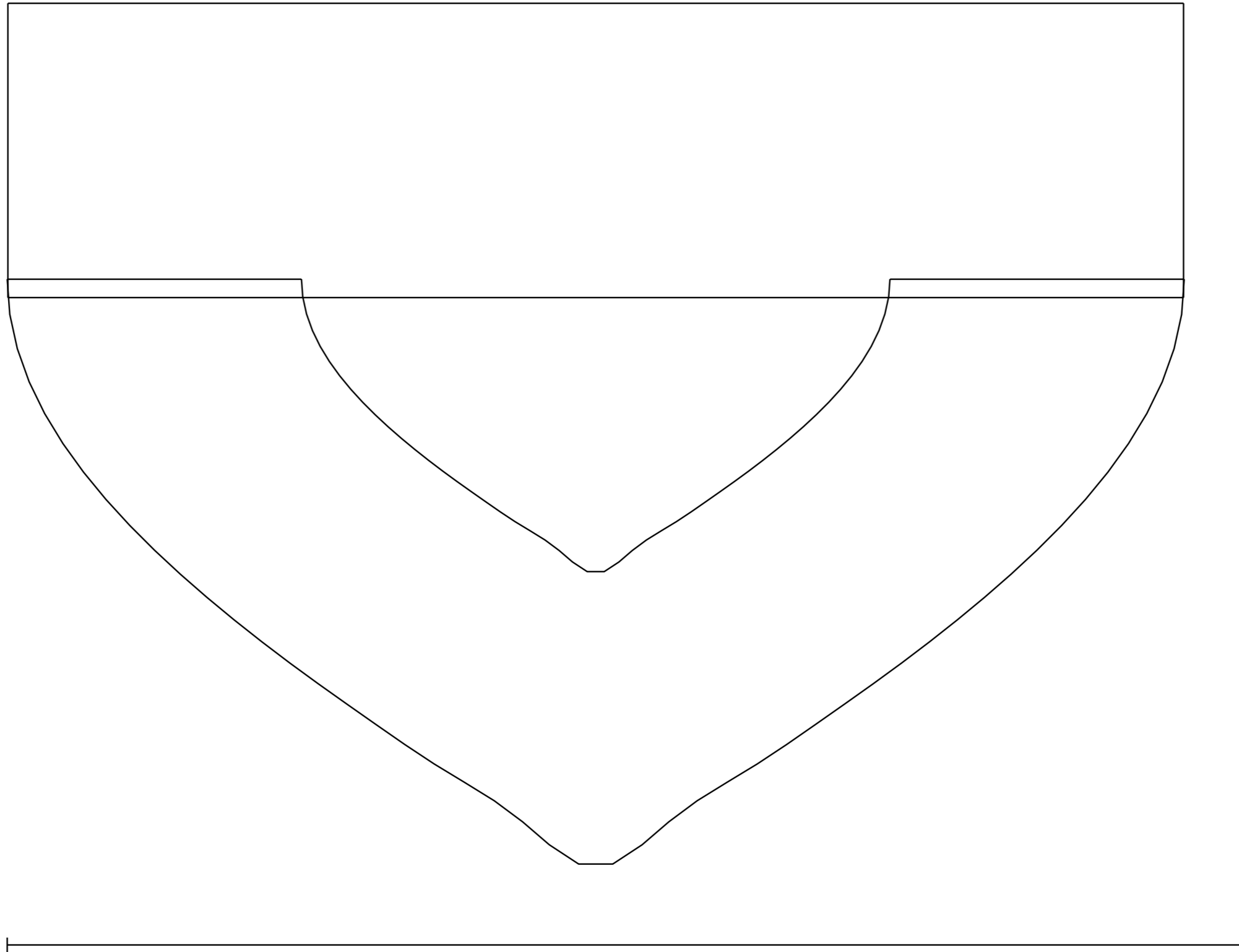


Figure 10: Body Plan—Section at stn.6 (Y=3050mm)

Full-Breadth Plan

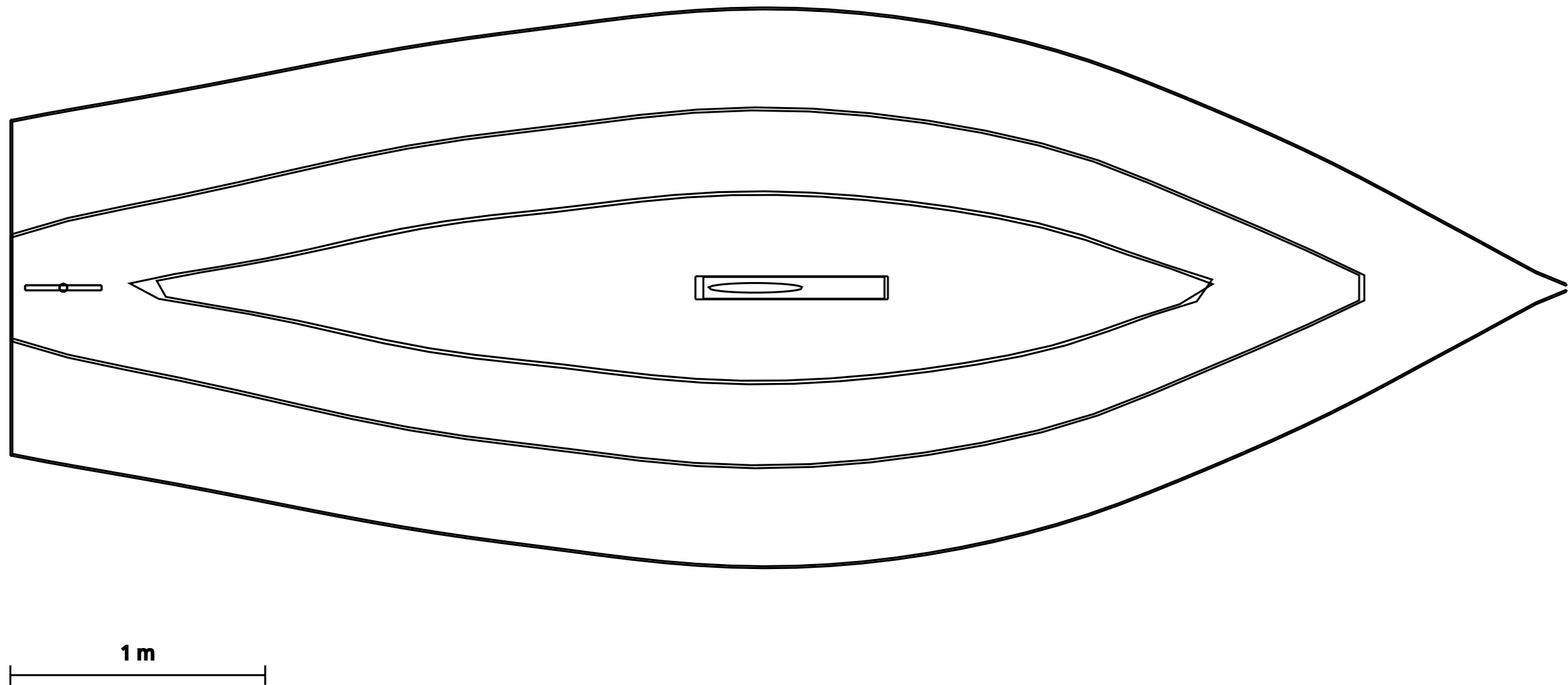


Figure 11: Combined full-breadth plan—All waterlines overlaid

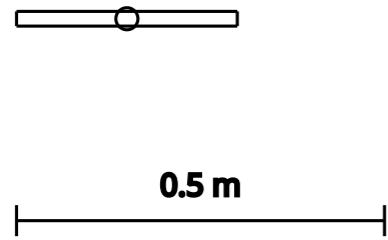


Figure 12: Full-Breadth—Waterline wl_below_2 (Z=-200mm)

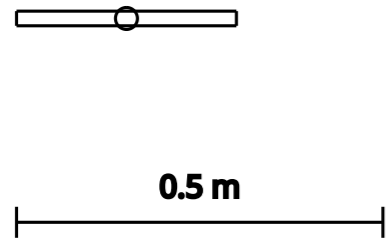


Figure 13: Full-Breadth—Waterline wl_below_1 (Z=-100mm)

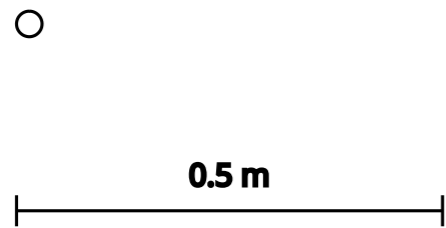
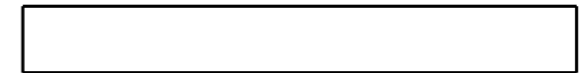
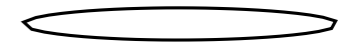


Figure 14: Full-Breadth—Waterline waterline (Z=1mm)



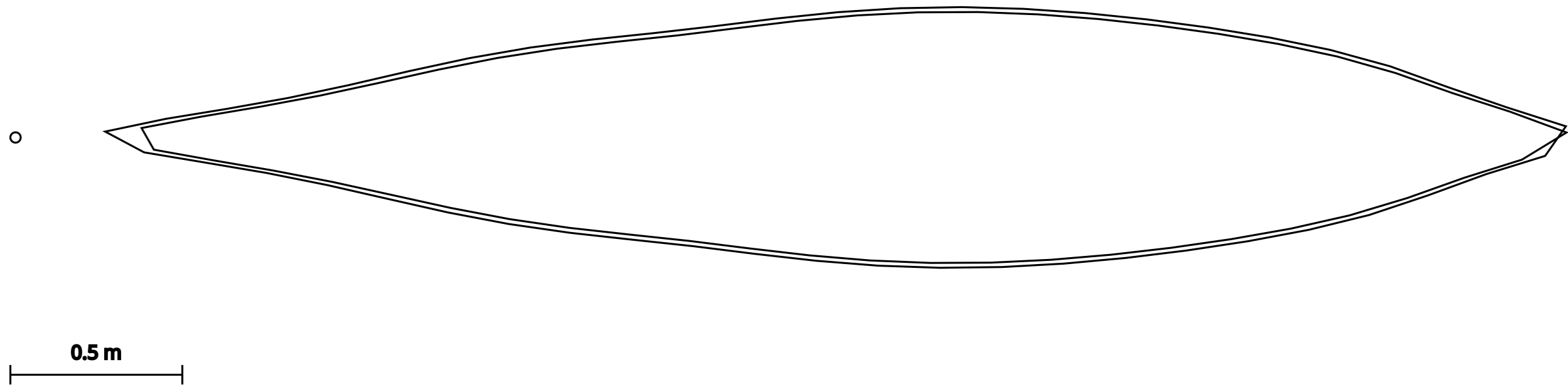


Figure 15: Full-Breadth—Waterline wl_above.1 (Z=200mm)

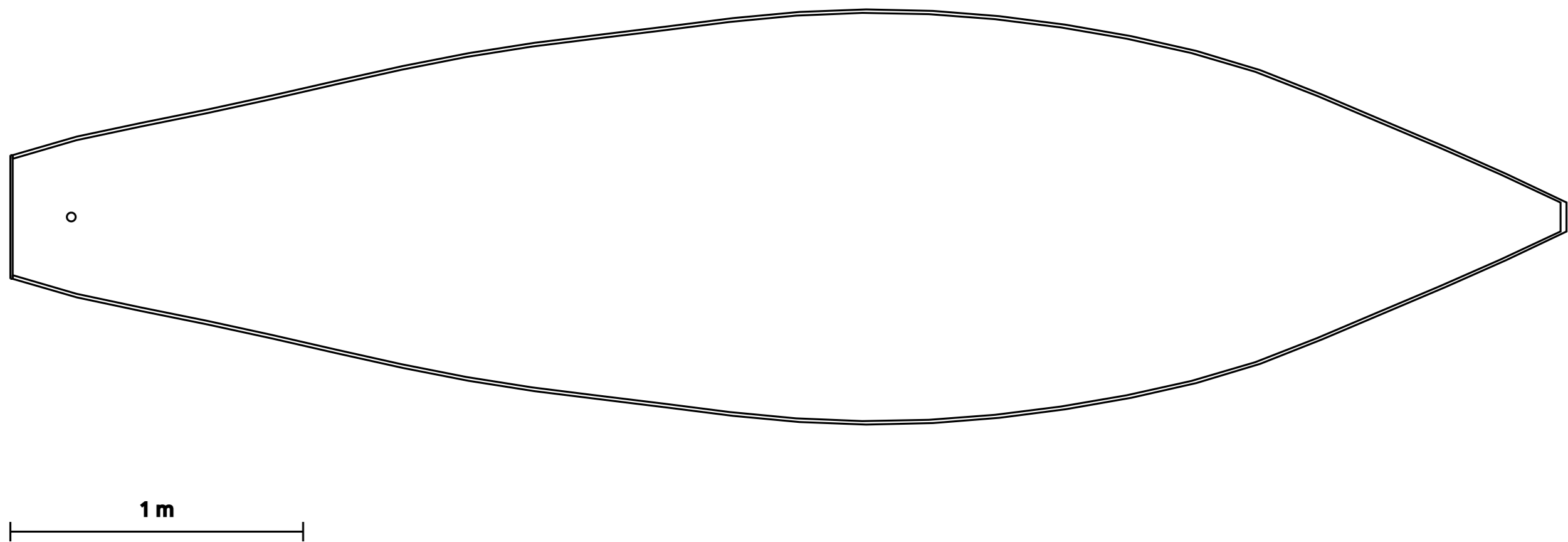
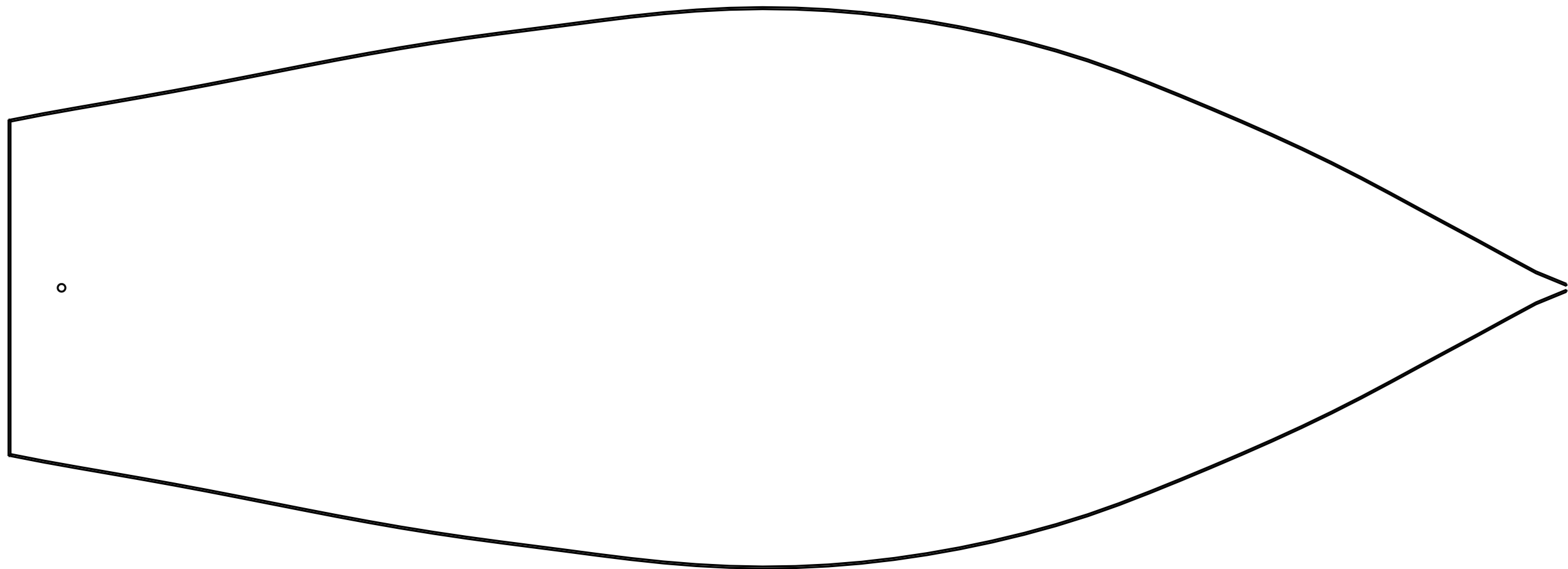


Figure 16: Full-Breadth—Waterline wl_above.2 (Z=400mm)



1 m

Figure 17: Full-Breadth—Waterline deck ($Z=898\text{mm}$)